

**LED SLIM DISKS**  
**PK616LED • ADJUSTABLE 6-LIGHT ROUND**




**HOUSING RING FOR SURFACE MOUNTING**



**PK H600E**  
 (Sold separately)  
 Aluminum Housing for surface mount.  
**Dimensions:** 5"Ø x 1-3/8"H  
**Finish:** SN – Satin Nickel

**SPECIFICATIONS**

Model	PK616LED-38-30	PK616LED-38-40	PK616LED-38-65
LED Quantity	6 x 1W	6 x 1W	6 x 1W
Input Voltage	12V DC	12V DC	12V DC
Wattage	8.4W	8.4W	8.4W
Lumens	225 lm	255 lm	367 lm
Efficacy	26.7 lm/W	30.4 lm/W	43.7 lm/W
Color Temperature	3000K	4000K	6500K
Beam Angle*	38°	38°	38°
Current†	350mA	350mA	350mA
Lamp Life	50,000 hours	50,000 hours	50,000 hours
Dimensions	5"Ø x 1-5/8" H x 5/8" Ext	5"Ø x 1-5/8" H x 5/8" Ext	5"Ø x 1-5/8" H x 5/8" Ext
Cut Out	4-3/8"Ø	4-3/8"Ø	4-3/8"Ø
Housing	Aluminum	Aluminum	Aluminum
Finish‡	Brushed Aluminum (Standard)	Brushed Aluminum (Standard)	Brushed Aluminum (Standard)
Operating Temperature	5°F - 122°F	5°F - 122°F	5°F - 122°F
Mounting§	Recess or Surface Mount	Recess or Surface Mount	Recess or Surface Mount
Environment	Dry, Indoor	Dry, Indoor	Dry, Indoor
Warranty	5 Years – see published warranty terms for detailed information.		
Certifications	 Intertek CE, RoHS		

\* 38° beam angle.

This fixture requires a constant current power supply. However, the in-line driver allows the use of constant voltage power supply.

Surface Mount housing sold separately.

**DESCRIPTION**

- Adjustable 6-Light Round Slim Disk.
- 20° adjustment from vertical
- Includes In-line 12V 7W 350mA electronic LED driver.
- Includes 72" in-line extension cable.



IN-LINE DRIVER

72" IN-LINE EXT.

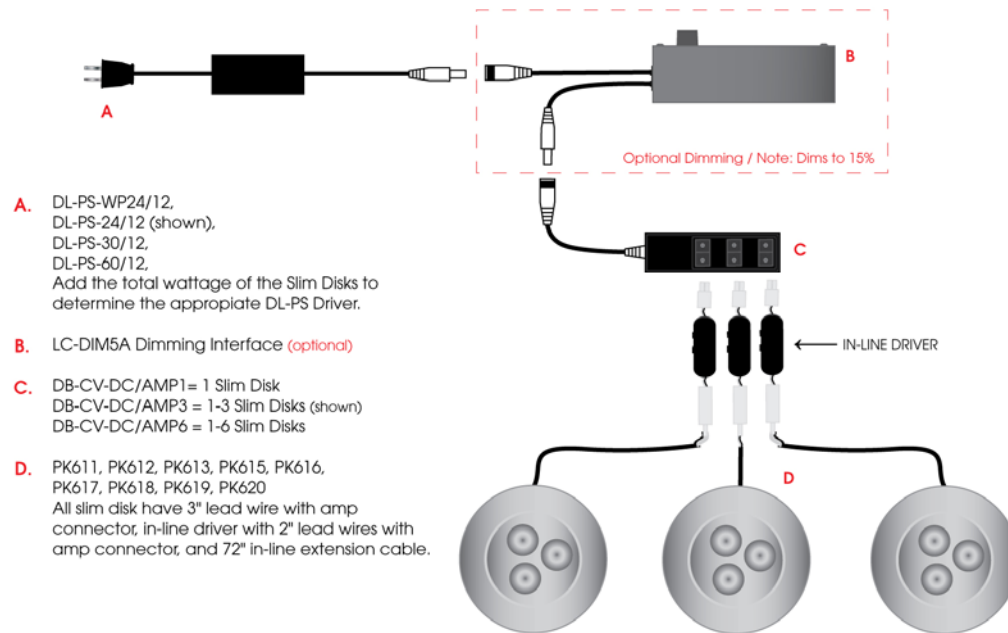
# LED SLIM DISKS PK616LED • ADJUSTABLE 6-LIGHT ROUND

## WIRING DIAGRAMS

### EASY INSTALLATION

#### Plug and Play Dim/Non-Dim

##### Parallel Port P+P



### HARD WIRE - New Construction Dim/Non-Dim

#### Parallel Port HW

