

LED SLIM DISKS
PK611LED • ADJUSTABLE 3-LIGHT ROUND




HOUSING RING FOR SURFACE MOUNTING



PK H600A
 (Sold separately)
 Aluminum Housing for surface mount.
Dimensions: 3-1/8"Ø x 1"H
Finish: SN – Satin Nickel

SPECIFICATIONS

Model	PK611LED-38-30	PK611LED-38-40	PK611LED-38-65
LED Quantity	3 x 1W	3 x 1W	3 x 1W
Input Voltage	12V DC	12V DC	12V DC
Wattage	4.2W	4.2W	4.2W
Lumens	122 lm	138 lm	190 lm
Efficacy	29 lm/W	29 lm/W	45 lm/W
Color Temperature	3000K	4000K	6500K
Beam Angle*	38°	38°	38°
Current†	350mA	350mA	350mA
Lamp Life	50,000 hours	50,000 hours	50,000 hours
Dimensions	3-1/8"Ø x 1-1/8"H x 1/2"Ext	3-1/8"Ø x 1-1/8"H x 1/2"Ext	3-1/8"Ø x 1-1/8"H x 1/2"Ext
Cut Out	2-7/8"Ø	2-7/8"Ø	2-7/8"Ø
Housing	Aluminum	Aluminum	Aluminum
Finish‡	Brushed Aluminum (Standard)	Brushed Aluminum (Standard)	Brushed Aluminum (Standard)
Mounting§	Recess or Surface Mount	Recess or Surface Mount	Recess or Surface Mount
Environment	Dry, Indoor	Dry, Indoor	Dry, Indoor
Warranty	5 Years – see published warranty terms for detailed information.		
Certifications	 Intertek CE, RoHS		

* 38° beam angle

This fixture requires a constant current power supply. However, the in-line driver allows the use of constant voltage power supply.

Surface Mount Housing sold separately

DESCRIPTION

- Adjustable 3-light Round Slim Disk
- 20° adjustment from vertical
- Includes In-line 12V 3W 350mA electronic LED driver
- Includes 72" in-line extension cable



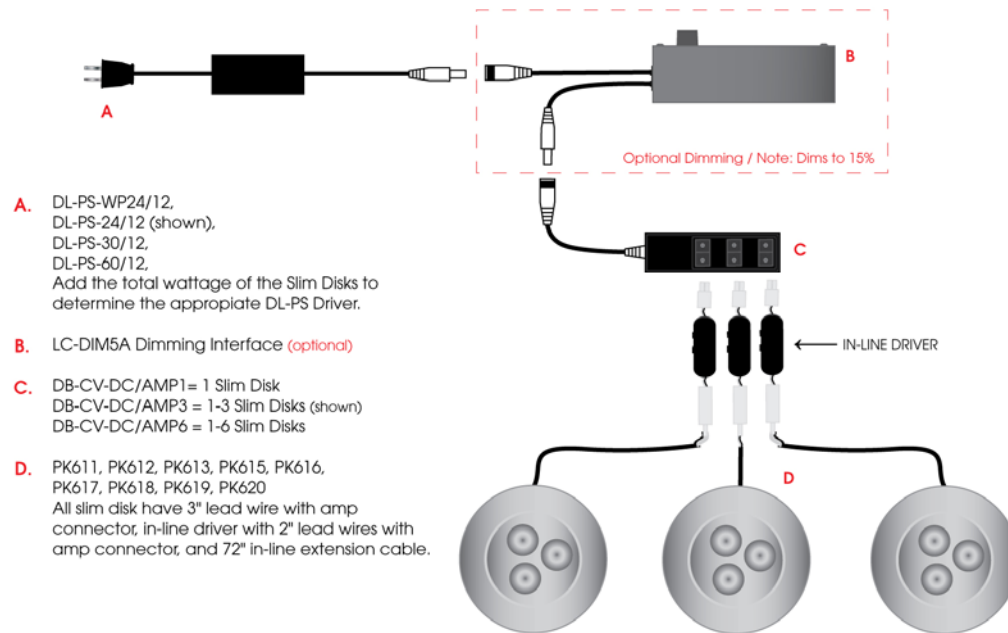
LED SLIM DISKS

WIRING DIAGRAMS

EASY INSTALLATION

Plug and Play Dim/Non-Dim

Parallel Port P+P



HARD WIRE - New Construction Dim/Non-Dim

Parallel Port HW

